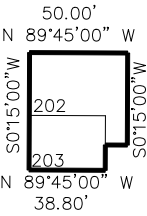


PART OF THE NE.1/4Z, OF SECTION 32, T.7N., R.1W., S.L.B. & M.
NORTH OGDEN BUSINESS CENTER PH 1 FIRST AMD
an EXPANDABLE CONDOMINIUM PROJECT

TAXING UNIT: 503

IN NORTH OGDEN CITY
SCALE 1" = 40'

SEE PAGE 45



BUILDING	UNIT	SERIAL NUMBER	SQ FT	OWNERSHIP
2	202	181430001	1,770 SQ FT	2274 WASHINGTON, LLC
	203	181430002	1,030 SQ FT	JSA INV LLC

SEE PAGE 45

10' UTILITY & DRAINAGE EASEMENTS EACH
SIDE OF PROPERTY LINES AS INDICATED
BY DASHED LINES EXCEPT AS OTHERWISE
SHOWN.

FOR COMPLETE ENG DATA SEE
ORIGINAL DEDICATION PLAT IN
BOOK 74, PAGES 71 & 72 OF RECORDS.